

Entry / ECO

Standard / STD

Professional / PRO

ODM & OEM

Intelligent / INT



LED Downlight

DL268-UGR Series





Introduction

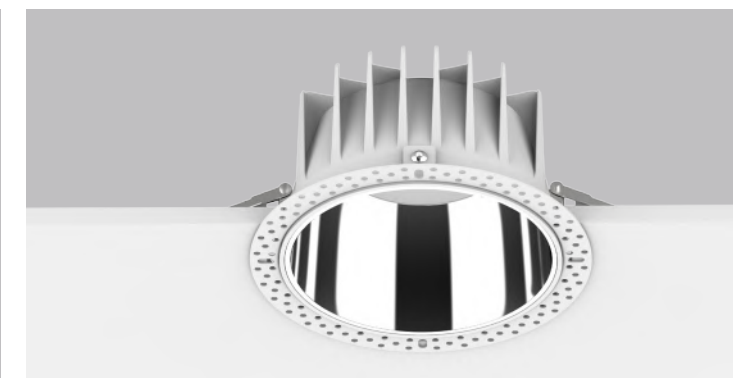
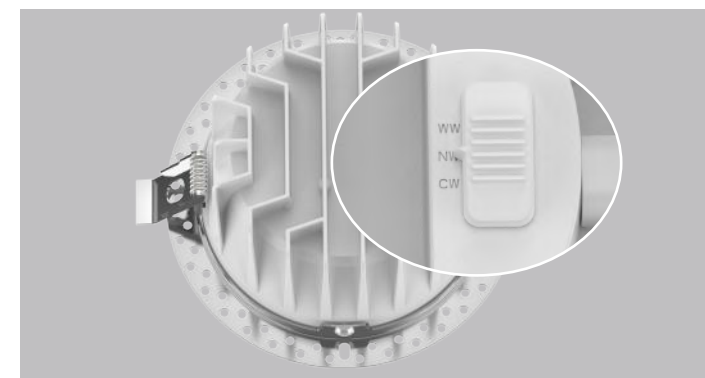
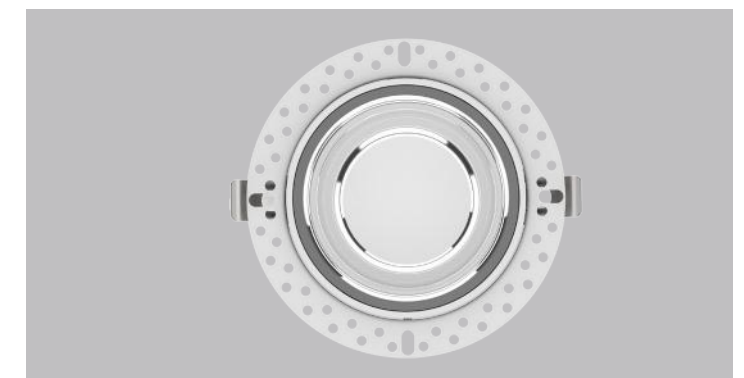
This downlight with traditional deep reflector which provides a perfect combination of high lighting efficiency, comfortable lighting and humanization design UGR<19, without compromising on lighting performance (color rendering and color uniformity). CCT changeable function is available. It offers a wide choice of options for creating the desired ambience. Two frame options: Standard frame and invisible frame, complete size from 2.5inch to 10inch.

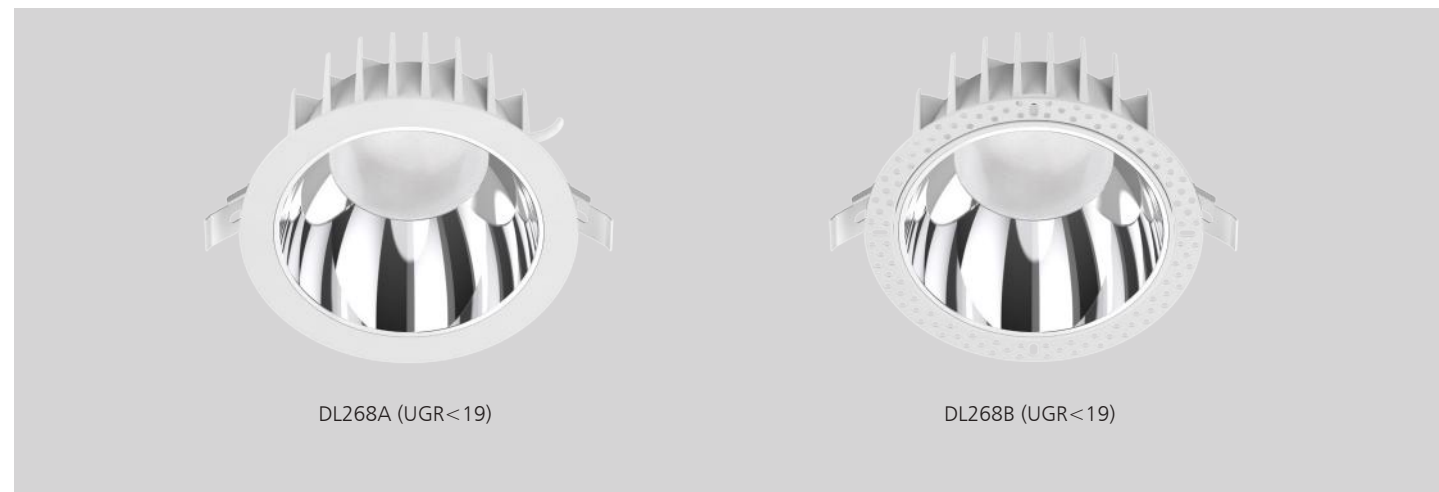
Features

- Two frame options: Standard frame & invisible frame (Can be hidden with a paintcoat)
- Deep reflector design with UGR<19.
- High lumen efficiency, 100-110lm/W.
- Interchangeable CCT(3000K/4000K/5700K) with slide switch.
- IP54 for indoor use only.
- Complete sizes:2.5/3/4/6/8/10inch.
- Wide power range: 8/10/18/25/35/40/45/50W.
- Flicker free external driver, triac dimmable, DALI, 0-10V available.

Application Areas

It is designed for general lighting applications in office, supermarket, shop, school, hotel, etc. It is also widely used for public areas, such as stairway, lobby, reception, corridors etc.



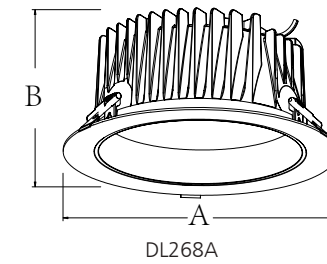


DL268A (UGR<19)

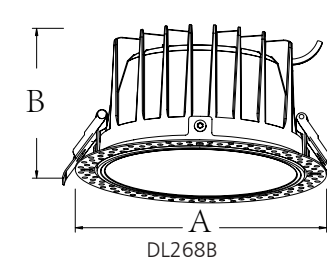
DL268B (UGR<19)

Technical Data Sheet(1)

Code No.	DL268-2.5-8W	DL268-3-10W	DL268-4-10W	DL268-4-18W	DL268-6-18W	DL268-6-25W		
Dimension(mm)	Ø95*55	Ø108*55	Ø145*77		Ø172*90			
Cutout (mm)	Ø82-88	Ø90-95	Ø125-135		Ø150-165			
Watt(W)	8W	10W	10W	18W	18W	25W		
Rated Input Voltage(V)	AC220-240V							
Input Voltage(V)	230V							
LED Module Input	-							
Light Source	SMD 2835							
SDCM	<6							
CCT(K)	1-CCT: 3000K/4000K/5000K/5700K II 3-CCT: 3000K/4000K/5700K							
CCT Selection DIP Switch	YES							
Luminous Flux (lm) ±5%	Non-DIM	1-CCT	450-750	600-800	850-1100	1500-1900	1500-1900	2400-2800
			450-750	600-800	850-1100	1400-1800	1400-1800	2300-2700
	DIM	3-CCT	450-750	600-800	800-1000	1500-1700	1500-1800	2300-2500
			450-750	600-800	800-1000	1400-1700	1400-1700	2200-2500
CRI	Ra>80							
Beam Angle (°)	60°							
UGR	<19							
LED Driver	Built-out							
Dimming Option	Triac dimmable							
Sensor	-							
Emergency Kits	-							
Electrical Class	Class II							
Ingress Protection (IP Rating)	IP54							
Impact Resistance (IK Rating)	IK06							
Product Finishing(Base)	White RAL9016 / Black RAL9005							
Materials of Optics	PC							
Materials of Housing	Die-casting							
Lifetime (hr)	50,000h							
Glow wire test (°C)	650°C							
Operating Temp. (°C)	-20°C ~45°C							
Storage Temp. (°C)	-20°C ~65°C							
Installation	Recessed installation							



DL268A



DL268B

Measurement

Code	Dimension(mm)		Size(mm)	Product Weight (Kg)		Package weight (Kg)		Carton Size(cm)	Qty/CTN	20GP (pcs)	40HQ (pcs)
	A	B		N.W/PC	G.W/PC	N.W/CTN	G.W/CTN				
DL268A/B-2.5	95	55	Ø95*55	0.27	0.315	9.72	12.07	48.5*37*29.5	36PCS	18684	44712
DL268A/B-3	108	55	Ø108*55	0.29	0.345	10.44	13.15	48.5*37*29.5	36PCS	18684	44712
DL268A/B-4	145	77	Ø145*77	0.58	0.66	10.44	12.63	50*34*38.5	18PCS	7884	17892
DL268A/B-6	172	90	Ø172*90	0.69	0.9	8.28	11.6	59*40*25.5	12PCS	4992	12480
DL268A/B-8	228	107	Ø228*107	1.13	1.36	13.56	17.36	52*52*41.5	12PCS	2640	6336
DL268A/B-10	280	123	Ø280*123	1.55	1.86	9.3	12.2	64*33*49	6PCS	1716	3930

Technical Data Sheet(2)

Code No.	DL268-8-18W	DL268-8-25W	DL268-8-35W	DL268-8-40W	DL268-10-35W	DL268-10-45W	DL268-10-50W		
Dimension(mm)	Ø228*107				DL280*123				
Cutout (mm)	Ø200-210				Ø230-260				
Watt(W)	18W	25W	35W	40W	35W	45W	50W		
Rated Input Voltage(V)	AC220-240V								
Input Voltage(V)	230V								
LED Module Input	-								
Light Source	SMD 2835								
SDCM	<6								
CCT(K)	1-CCT: 3000K/4000K/5000K/5700K II 3-CCT: 3000K/4000K/5700K								
CCT Selection DIP Switch	YES								
Luminous Flux (lm) ±5%	Non-DIM	1-CCT	1650-2000	2600-3000	3400-4000	3700-4300	3700-4100	4400-5000	4700-5300
			1600-1900	2500-2900	3300-3900	3600-4200	3600-4000	4300-4900	4600-5200
	DIM	3-CCT	1600-1900	2500-2900	3300-3900	3600-4200	3600-4000	4300-4900	4600-5200
			1500-1800	2400-2800	3200-3800	3600-4100	3500-3900	4300-4900	4500-5200
CRI	Ra>80								
Beam Angle (°)	60°								
UGR	<19								
LED Driver	Built-out								
Dimming Option	Triac dimmable								
Sensor	-								
Emergency Kits	-								
Electrical Class	Class II								
Ingress Protection (IP Rating)	IP54								
Impact Resistance (IK Rating)	IK06								
Product Finishing(Base)	White RAL9016 / Black RAL9005								
Materials of Optics	PC								
Materials of Housing	Die-casting								
Lifetime (hr)	50,000h								
Glow wire test (°C)	650°C								
Operating Temp. (°C)	-20°C ~45°C								
Storage Temp. (°C)	-20°C ~65°C								
Installation	Recessed installation								

Driver Datasheet (Non-dimmable)

Total load wattage		8W	10W	18W	25W	35W	40W	45W	50W
Output	Output Voltage range	DC30-40V							
	Rated output current	180mA	250mA	450mA	600mA	850mA	1000mA	1100mA	1250mA
	Line Regulation	±5%							
	Setup, Rise Time	≤0.5S							
	Flickering Index	0.5%(NO RISK)		0.8%(NO RISK)		0.8%(NO RISK)		0.5%(NO RISK)	
Input	Input Voltage	AC220-240V							
	Rated Input Voltage(V)	AC230V							
	Frequency	50Hz							
	Input Current	≤0.06A	≤0.06A	≤0.11A	≤0.14A	≤0.2A	≤0.25A	≤0.25A	≤0.28A
	Rated Input Current	≤0.05A	≤0.05A	≤0.09A	≤0.12A	≤0.17A	≤0.22A	≤0.22A	≤0.25A
	Power Factor	0.9							
	THD	<20% @230V							
	Efficiency	86%			88%				
Protection	No load wattage	≤0.5W							
	Short circuit protection	Pass							
	Over voltage protection	Pass							
	Over temperature protection	Pass							
Safety & EMC	Withstand voltage	I/P-O/P:3.75KVac, <5mA 60S							
	Isolation Resistance	I/P-O/P: 500VDC, ≥100M Ω							
	Surge	IEC61000-4-5(L-N:0.5KV)				IEC61000-4-5(L-N:1KV)			
	EMC Emission	EN55015, EN61000-3-2							
	EMC Immunity	EN61000-4-2,3,4,5,6,8,11; EN61547							

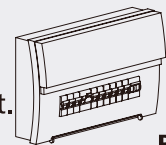
Driver Datasheet (Triac Dimming)

Total load wattage		8W	10W	18W	25W	35W	40W	45W
Output	Output Voltage range	DC30-40V						
	Rated output current	180mA	230mA	430mA	580mA	800mA	1000mA	1100mA
	Line Regulation	±5%						
	Setup, Rise Time	≤1S						
	Flickering Index	<5%(LOW Risk)						
Input	Input Voltage	AC200-240V						
	Rated Input Voltage(V)	AC230V						
	Frequency	50Hz						
	Input Current	≤0.06A	≤0.06A	≤0.1A	≤0.14A	≤0.2A	≤0.25A	≤0.25A
	Rated Input Current	≤0.05A	≤0.05A	≤0.09A	≤0.13A	≤0.17A	≤0.22A	≤0.22A
	Power Factor	0.9						
	THD	<20% @230V						
	Efficiency	80%	83%	84%	84%			
Protection	No load wattage	<1W						
	Short circuit protection	Pass						
	Over voltage protection	Pass						
	Over temperature protection	Pass						
Safety & EMC	Withstand voltage	I/P-O/P:3.75KVac, <5mA 60S						
	Isolation Resistance	I/P-O/P: 500VDC, ≥100M Ω						
	Surge	IEC61000-4-5(L-N:0.5KV)				IEC61000-4-5(L-N:1KV)		
	EMC Emission	EN55015, EN61000-3-2						
	EMC Immunity	EN61000-4-2,3,4,5,6,8,11; EN61547						

Installation Procedure

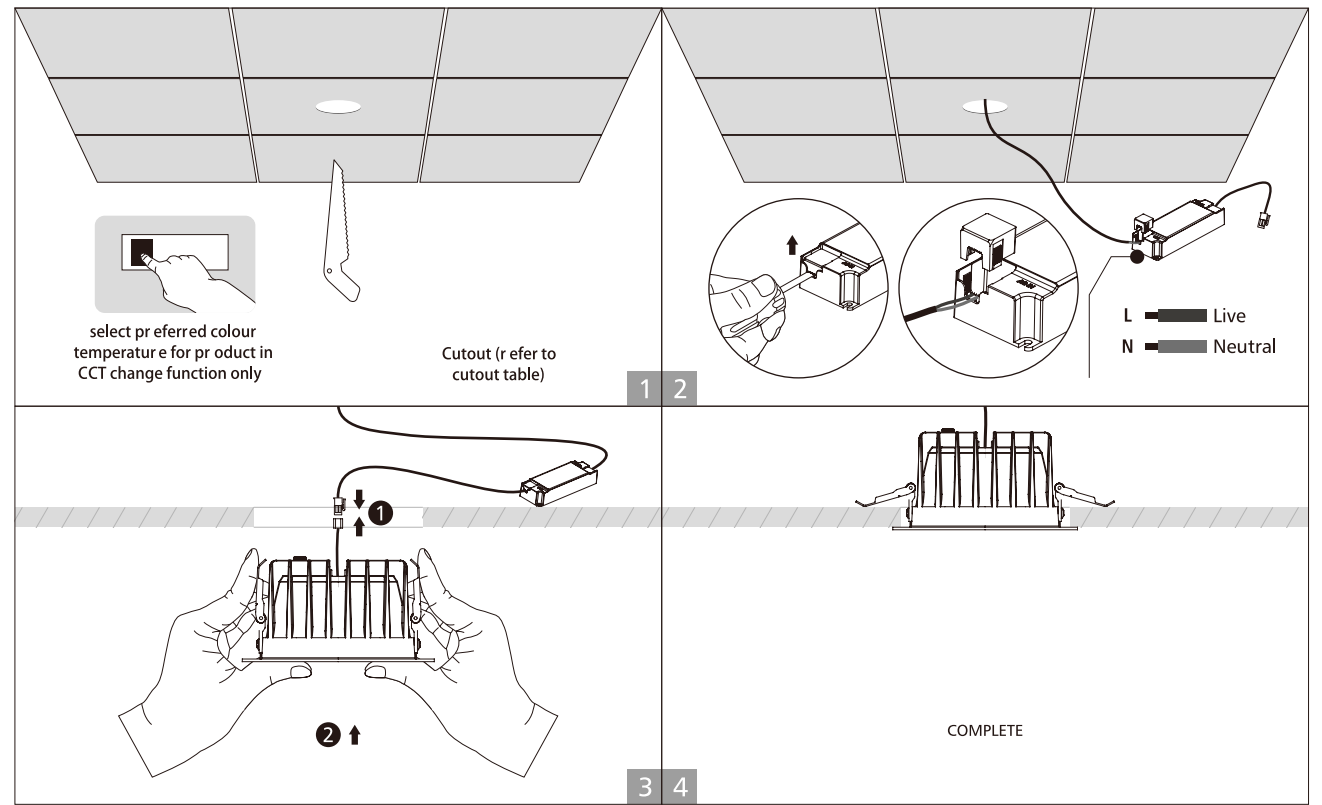
WARNING

1. Switch off power supply before installation / maintenance.
2. Switch on only after complete installation and examination of the circuit.
3. Professional electrician for installation and maintenance only.



Turn Off Power Supply

Recessed A



Recessed B

